

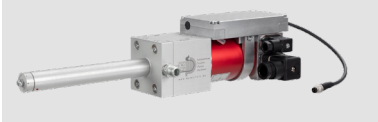


ROTARY GREASING UNIT RBE02

DP-D-006-000001 // rotary head 150 mm
 DP-D-006-000003 // rotary head 70 mm
 DP-D-006-000007 // rotary head 260 mm



**Optionally available with
 rotation control**



APPLICATION

The RBE02 rotary greasing unit is designed for non-contact wetting of internal contours.

DESCRIPTION

The RBE02 rotary greasing unit is a rotary head with electric drive and optional rotary control. The material is applied without air by centrifugal force. The continuous supply of lubricant ensures uniform greasing of the workpiece.

ADVANTAGES

- ▶ High flexibility, material application for a wide range of component contours
- ▶ Airless material application by centrifugal force with various viscous media
- ▶ Very low grease carryover
- ▶ Minimum wetting diameter \varnothing from 36 mm (depending on the application)

TECHNICAL DATA

Mechanical data

| | |
|--|--|
| Minimum wetting diameter | \varnothing 36 mm |
| Smallest rotor | \varnothing 14 mm |
| Largest rotor | \varnothing 20 mm |
| Rotor dimensions | Various rotor configurations available (We would be happy to determine the perfect configuration for your application in a metering test). |
| Length with standard rotor head 70 mm | 280 mm |
| Length with standard rotor head 150 mm | 350 mm |
| Length with standard rotor head 260 mm | 455 mm |
| Height | 60 mm |
| Width | 60 mm |
| Permissible media | oils and greases NLGI class 0–3 |
| Conveying capacity | max. 1 cm ³ /s |
| Weight | 1.9 kg |
| Volume | < 70 db(A) |

Motor data

| | |
|------------------|-------------------|
| U_N | 24 V DC |
| I_N | 4.8 A |
| P_2 | 89 W |
| n_N | max. 17.000 U/min |
| M_N | 5 Ncm |
| Protection class | IP54 |

Environmental conditions

| | |
|-----------------------|---------------|
| Operating temperature | 10–40 °C |
| Humidity | 40– max. 70 % |